



Grassland earless dragon (image: Steve Wilson)

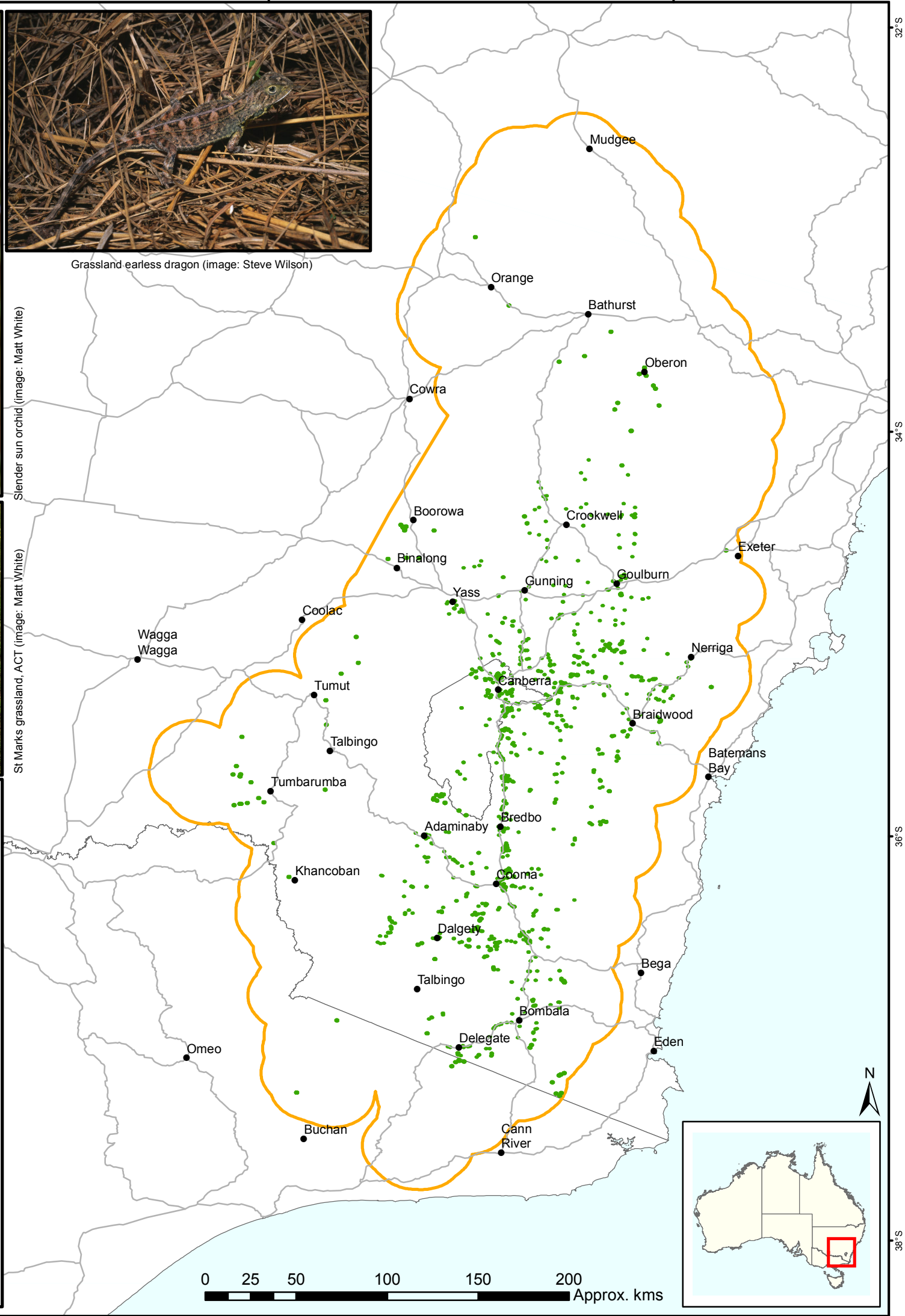
Slender sun orchid (image: Matt White)



St Marks grassland, ACT (image: Matt White)

This map represents the indicative distribution of the ecological community. Please note:

- Much of the total distribution is the same as that which had been EPBC Act protected since 2000, but the distribution has also been revised and expanded into some new areas.
- Minimum condition thresholds have been added to help determine when a patch is considered too degraded to be a 'matter of national environmental significance', and are detailed in the Conservation Advice and information guide.
- As this map is indicative, surveys may need to be carried out to determine if native grass-dominated grasslands are the ecological community.



## Natural Temperate Grassland of the South Eastern Highlands ecological community

### Legend

- Surveyed grassland sites that are indicative of areas where the ecological community most likely occurs (sites shown on the map have been increased in size to improve visibility)
- Outer range within which the ecological community may occur



Australian Government  
Department of the Environment

Method:  
Point data (1) clipped to an approximate boundary that consists of the South Eastern Highlands IBRA bioregion (sub-regions SEH6-16) with an approximate 18km buffer of IBRA sub-regions 6-16.  
Victorian point localities supplied by the Victorian Department of Sustainability and Environment, 2012.

Source:  
Localities 1:250,000, © Commonwealth of Australia (Geoscience Australia) 2006.  
Drainage 1:5,000,000 © Commonwealth of Australia (Geoscience Australia) 2006.  
Roads 1:10,000,000 © Commonwealth of Australia (Geoscience Australia) 2006.  
Coastline and State Borders, 1:100,000 © Commonwealth of Australia, (Geoscience Australia), 2006.  
Interim Biogeographic Regionalisation for Australia (IBRA) Bioregions, 1:250,000, contributed by State/Territory nature and conservation agencies, SEWPaC, version 7, 2012.  
(1) 'Natural Temperate Grassland sites', extracted from the Grassy Ecosystems Database, NSW Office of Environment and Heritage, 2015.

Caveat:  
The information presented in this map has been provided by a range of groups and agencies. While every effort has been made to ensure accuracy and completeness, no guarantee is given, nor responsibility taken by the Commonwealth for errors or omissions, and the Commonwealth does not accept responsibility in respect of any information or advice given in relation to, or as a consequence of, anything containing herein. The map has been collated from a range of sources, with data at various resolutions. Data used are assumed to be correct as received from the data suppliers.

Produced by:  
ERIN (Environmental Resources Information Network)  
Department of the Environment  
Australian Government,  
Date mapped: April 2016  
© Commonwealth of Australia, 2016 .

Projection: Geographic  
Datum: GCS GDA 1994