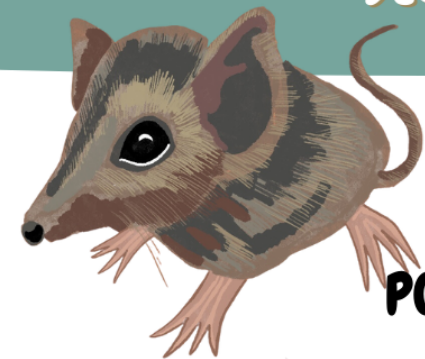


Letter Writing Guide: Protect Native Forests



- Handwritten letters to decision makers with a personal story are a powerful way to demonstrate community views and demand change.
- You're welcome to include drawings on the letter or the envelope.

Step 1: Address your envelope



**The Hon Tanya Plibersek MP
Minister for the Environment
PO Box 2676 Strawberry Hills NSW 2012**

Definitions

Threatened Listed Species: plants and animals listed under our national environment law to be at risk of extinction and in need of protecting.

Decision Maker: a person, such as a Minister or Politician, who has the power and ability to make decisions and big changes.

Extinction: A species of plant or animal no longer existing.

Biodiversity: the variety of plant and animal life in the world or in a particular habitat. Important for the web of life including the growing of food, creating clean water and clean air.

Tree hollow: hole that has formed in the trunk of a tree, used by animals to nest. They take over 100 years to form in very old trees.

Carbon sink: absorbs carbon dioxide from the atmosphere.

Step 2: Write your letter



Example Letter: put it into your own words
Protect Our Native Forests



Dear Minister,

I am writing to ask you to end native forest logging.

Thank you for your commitment to no new extinctions. In the face of the crisis faced by many of our threatened species, there is so much opportunity to show leadership. Now is the time to act to protect wildlife, and the habitat they rely on to survive.

Include a personal sentence about who you are and why you care.

Our precious native forests are home to threatened listed species including the swift parrot, greater glider, spotted-tailed quoll and koala. Without forests, wildlife will have nowhere to live, breed, forage and nest which will set them on a path to extinction. Tree hollows take over 100 years to form. Our native forests are worth more standing: for tourism, nature, carbon sinks, creating clean air and clean water. Instead forests are chopped up for woodchips and firewood. Once native forests are gone, they are gone forever.

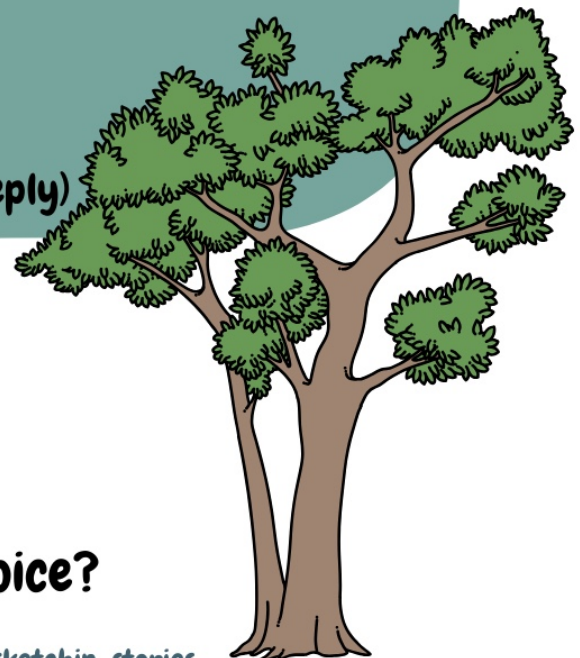
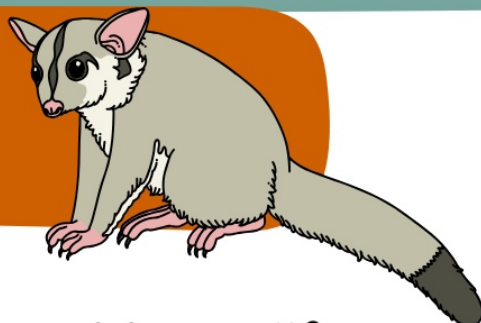
I call on you to ensure habitat for our threatened wildlife is protected by ending native forest logging.

Yours sincerely,

Your name

Your address or email (if you would like a reply)

Step 3:
Stamp and Post!



What could you do next to amplify your voice?